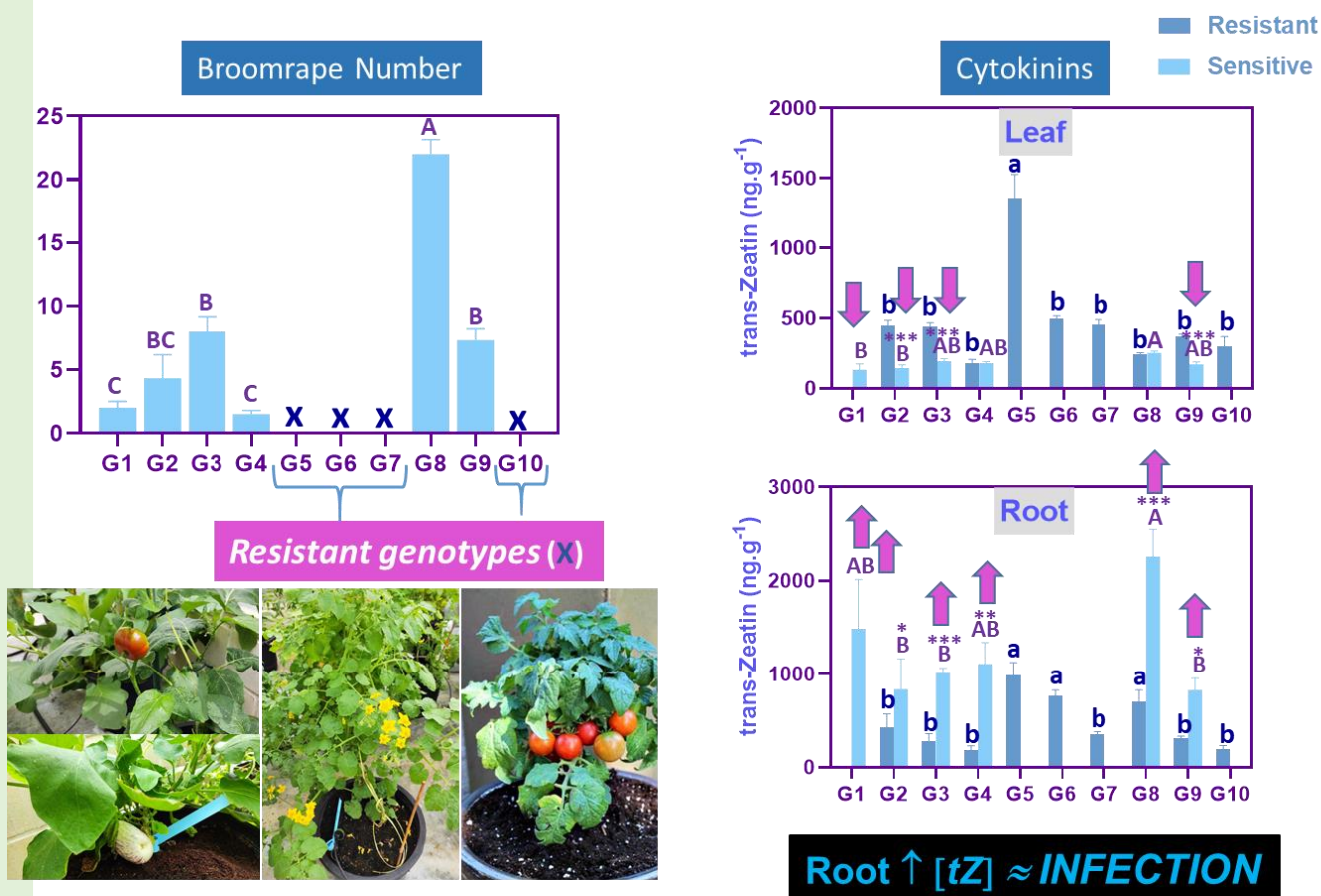


Task 4.1. Molecular tools for detecting virulent broomrapes and identifying host resistance



¿induction of the sink activity in the roots?

- There is a clear relationship between the *trans-zeatin* roots levels and the infection degree. May mean induction of the sink activity (that is, accumulation of sugars in the root) for the benefit of the parasitic plant.

Contact

